

BAYCEE 600 CONTENTS GAUGES FOR CO₂ TANKS

Features:

- Robust Construction.
- Magnetic Coupling through Mounting Flange.
- Remote Reading and Integral Level Switch Options.

Applications:

- Bulk Storage CO₂ Vessels.
- Mobile Tankers.

Bayham Baycee 600 float operated contents gauges are designed to give many years reliable service with little or no maintenance. Every gauge body and float is pressure tested to 700 psig (48 bar) prior to assembly. The magnetic drive mechanism between the mounting flange and the dial chamber runs through a gas purged sealed tube to prevent ice build-up.

Maintenance or changes to the gauge head assembly can be carried out without having to empty the tank. This means that a direct reading gauge can be easily modified to a remote reading gauge while the tank remains in service. It is recommended that the gauge function is checked during tank inspections and any worn parts replaced.



The 150mm local dial can be supplied with standard graduations in %, m3, Kg or Tonnes.

Two versions of the Baycee are available:

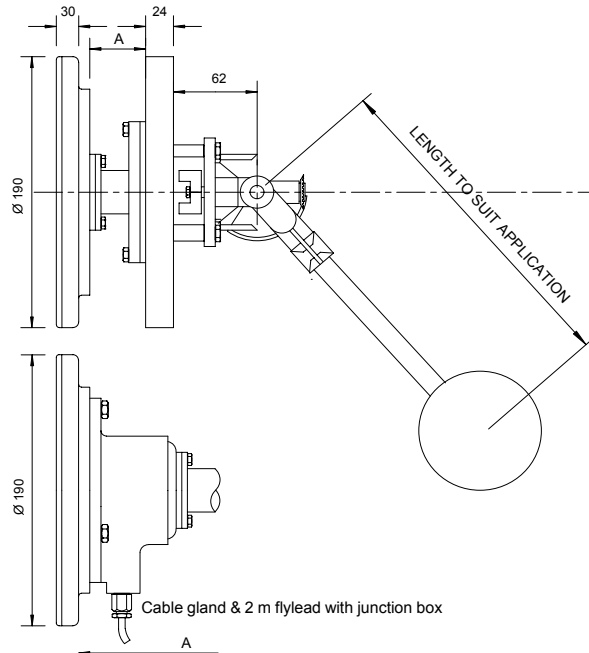
- Type: Baycee 600 direct reading gauges.
- Type: Baycee 600SR direct reading gauges with optional integral micro switches for level alarms or with a precision potentiometer or a loop powered 4-20 mA transmitter for remote monitoring. A complimentary range of panel mounted modules are available for additional level alarm control plus remote indicators with calibrated dials to match the Baycee local dial.

Standard Specifications

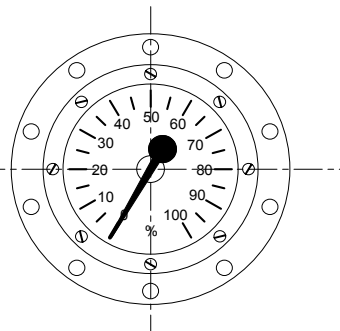
| | |
|---------------------------|--|
| Gauge housing: | Polyester Coated Aluminium |
| Dial window: | Lexan |
| Flange and float: | Stainless Steel |
| Gear assembly: | 16/40 or 11/40 ratio in Aluminium and Stainless Steel or all Stainless Steel |
| Maximum float arm travel: | 120 degrees (end mounted), 82.5 degrees (side mounted) |
| Maximum pointer travel: | 300 degrees |
| Pressure rating: | 30 bar. (48 bar test pressure) |
| Temperature range: | -40 to +80 °C |
| Micro switch rating | 250 Vac / 4 A resistive |
| Continuous outputs: | 1000 Ohm potentiometer or 4-20 mA loop powered (nom. 24 Vdc) |

BAYCEE 600 CONTENTS GAUGES FOR CO₂ TANKS

Type: Baycee 600



150mm Local Dial



Baycee 600 Gauge
Direct reading, no switches.
A= 60, 100 or 130mm

Baycee 600SR
1 or 2 integral micro switches or;
Potentiometer for remote monitoring or;
Integral loop powered 4-20mA transmitter.
A= 135 or 175mm

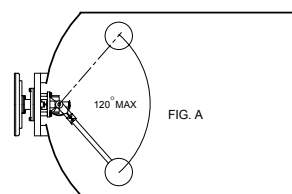
Type: Baycee 600SR

All dimensions in mm
See drawing S5072/1 for mounting pad details

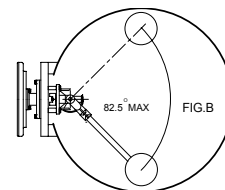
Information required:

1. Gauge type.
2. Tank dimensions.
3. Gauge mounting position.
4. Dial calibration plus any additional markings for max. fill etc.
5. Details of any internal obstructions
6. Whether static or mobile application.
7. Details of switch levels if required.
8. Type of remote monitoring if required.
9. Power supply available.
10. Dimension 'A'.

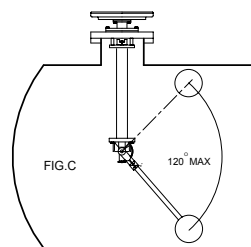
TANK MOUNTING VARIATIONS



CENTRE END MOUNTED



CENTRE LINE MOUNTING ON
HORIZONTAL CYLINDER



TOP MOUNTING WITH EXTENDED
FLOAT ARM PIVOT

R&G

BAYHAM LTD.

Bayham Ltd. Rutherford Road Basingstoke Hampshire UK RG24 8PG
Tel: +44 (0) 1256 464911 Fax: +44 (0) 1256 464366