

BAYHAM

LP580 CONTENTS GAUGES FOR LPG TANKS

Features:

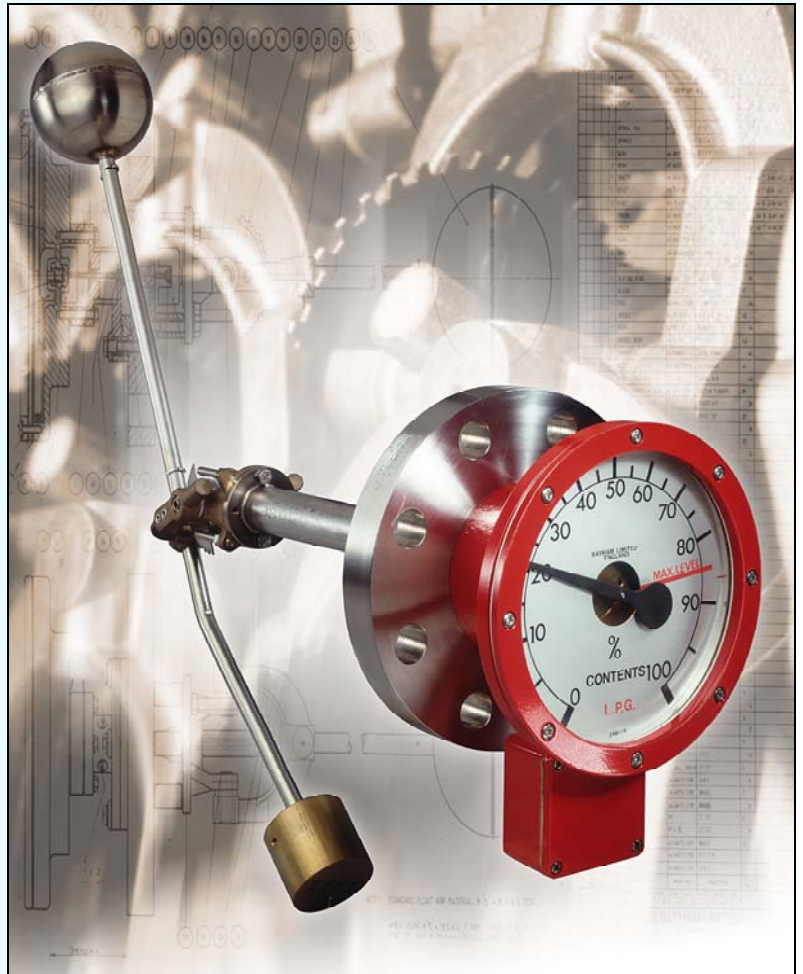
- Robust Construction.
- Magnetic Coupling through Mounting Flange.
- Remote Reading and Integral Level Switch Options.
- Version for Recessed Mounting.
- Top or Side Mounting.

Applications:

- Bulk Storage LPG Vessels.
- Mobile Tankers.

Bayham LP580 float operated contents gauges are designed to give many years reliable service with little or no maintenance. Every gauge body and float is pressure tested to 700 psig (48 bar) prior to assembly.

Maintenance or changes to the gauge head assembly can be carried out without having to empty the tank. This means that a direct reading gauge can be easily modified to a remote reading gauge while the tank remains in service. It is recommended that the gauge function is checked during tank inspections and any worn parts replaced.



150mm or 250mm local dial options can be supplied with standard graduations in %, m3, Kg or Tonnes.

Versions of the LP580 are:

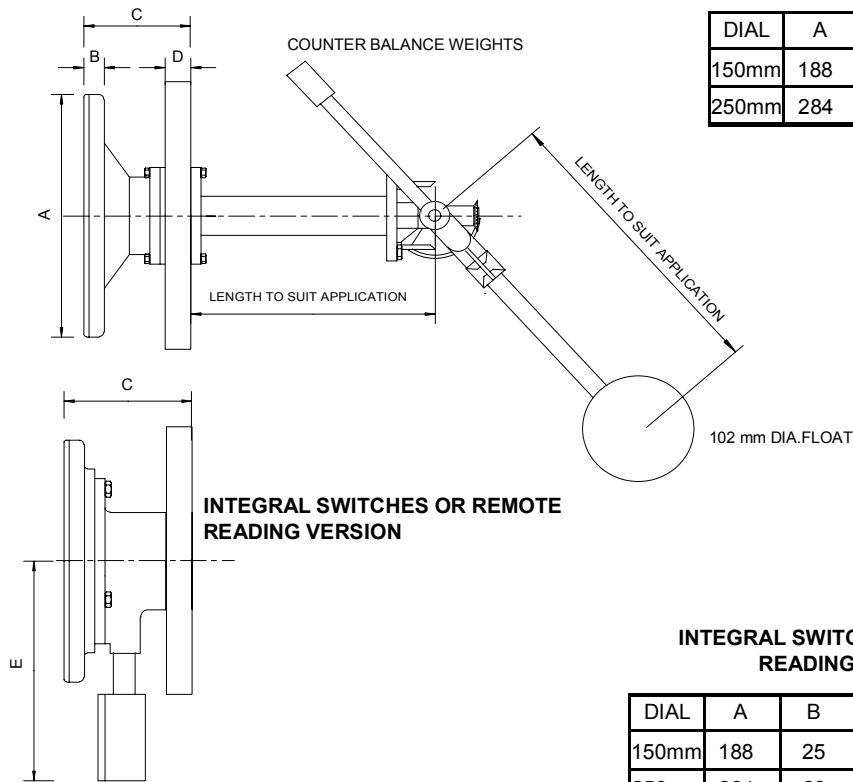
- Type: LP580 direct reading gauge with options for integral level switches or remote reading for side mounting.
- Type: LP580 direct reading top mounting gauge with optional right angled dial assembly.
- Type: LP581 direct reading gauge for recessed mounting.

Standard Specifications

| | |
|---------------------------|--|
| Gauge housing: | Polyester Coated Aluminium |
| Dial window: | Glass |
| Flange and float: | Stainless Steel |
| Gear assembly: | 16/40 or 11/40 ratio in Aluminium and Stainless Steel or all Stainless Steel |
| Maximum float arm travel: | 120 degrees (end mounted), 82.5 degrees (side mounted) |
| Maximum pointer travel: | 300 degrees |
| Pressure rating: | 30 bar. (48 bar test pressure) |
| Temperature range: | -40 to +80 0C |
| Micro switch rating | 250 Vac / 4 A resistive |
| Continuous outputs: | 1000 Ohm potentiometer |

LP580 CONTENTS GAUGES FOR LPG TANKS

DIRECT READING GAUGE



DIRECT READING GAUGE

| DIAL | A | B | C | D |
|-------|-----|----|----|------|
| 150mm | 188 | 25 | 95 | 25.4 |
| 250mm | 284 | 28 | 98 | 25.4 |

INTEGRAL SWITCHES OR REMOTE READING VERSION

| DIAL | A | B | C | D | E |
|-------|-----|----|-----|------|-----|
| 150mm | 188 | 25 | 127 | 25.4 | 175 |
| 250mm | 284 | 28 | 130 | 25.4 | 220 |

Information required:

1. Gauge type.
2. Tank dimensions.
3. Gauge mounting position.
4. Dial calibration plus any additional markings for max. fill etc.
5. Details of any internal obstructions
6. Whether static or mobile application.
7. Details of switch levels if required.
8. Type of remote monitoring if required.
9. Power supply available.

ADDITIONAL DRAWINGS

| Drawing No. | Description |
|-------------|--|
| S.4764/2 | Top mounting LP580 with right angle dial housing. |
| S. 4764/3 | Side mounting LP580. |
| S.4764/4 | Top mounting LP580. |
| S.4764/5 | Side mounting LP580 with integral level switches or potentiometer for remote reading. |
| S.4764/6 | Top mounting LP580 with integral level switches or potentiometer for remote reading with right angle dial housing. |
| S.4764/7 | Top mounting LP580 with integral level switches or potentiometer for remote reading. |
| S.5056 | Type LP581 for recessed mounting. |

R&G

BAYHAM LTD.

Bayham Ltd. Rutherford Road Basingstoke Hampshire UK RG24 8PG
Tel: +44 (0) 1256 464911 Fax: +44 (0) 1256 464366

Leaflet LP580 1
2003